



PINTI

PROFESSIONAL PAINT & TOOLS
MADE IN ITALY

February 2016

NAME: **VENEZIA**
SERIAL CODE: PPMAC

CLASSIFICATION: Water metallized paint sand effect for interiors with good covering and excellent easy application.

KIND OF USE: Ideal to protect and decorating inner surfaces. Maldive presents a good metallic materic effect with parts of surface shiny and parts matt, which increase the value of modern and classic interiors.

COLOUR: Pearl, gold, light gold, bronze, copper base.

CHEMICAL COMPOSITION: acrylic copolymer modified in water emulsion.

SPECIFIC WEIGHT: 1.300+/-0.050 Kg/lit

VISCOSITY OF PRODUCT: 12000+/-2000 cps

APPLICATION SYSTEM: brush, special spalter.

DILUTION: Ready to be used, if necessary 3-5% with water, maximum.

MEDIUM OUTPUT mq/lit per coat: 7 - 9 mq/lit for coat.

DRYING: with air at 20°C and humidity 60%. Application at +5°C minimum.

out of touch	in the depth	time of covering
30-60 min	2-3 h	4-5 h

TABLE DIR.2004/42/CE :

A/I-BA Product= Decorative effects paint

Limits UE(2010)= 200 gr/lit

C.O.V. gr/Lt = 60 gr/Lt.

Dilution for application= 5% with water

C.O.V. (ready to be used) gr/Lt.= Max 60 gr/Lt.

PREPARATION OF THE SURFACE: On new surface, apply with brush a coat of acrylic primer SPECIAL FIXATIVE.

On dry surface, apply a coat with roller of uniform white primer DAS.

On old surface, brush thoroughly to remove all loose or flaking parts, restoring the missing parts with plaster, then proceed like for new surface.

APPLICATION CYCLES: When the surface is prepared apply a coat of Maldive distributing the product to obtain desired effect. To obtain an effect more shiny, when the product is dry, apply a second coat of Maldive.

NOTE: Available in lithographed bucklets of 14 L, 4 L, 1L.

STABILITY IN STOCK : 1 year at +5°/ +35°C in the original sealed containers. Protect from freezing weather.

All the informations in this card are exact and accurate, as we know, so they must be considered reliable. In any case they can't mean a guarantee from our, as the conditions of its use out of our control.



Copper



PINTI

PROFESSIONAL PAINT & TOOLS
MADE IN ITALY

February 2016

NAME: **VENEZIA**
SERIAL CODE: PPMAG

CLASSIFICATION: Water metallized paint sand effect for interiors with good covering and excellent easy application.

KIND OF USE: Ideal to protect and decorating inner surfaces. Maldive presents a good metallic materic effect with parts of surface shiny and parts matt, which increase the value of modern and classic interiors.

COLOUR: Pearl, gold, light gold, bronze, copper base.

CHEMICAL COMPOSITION: acrylic copolymer modified in water emulsion.

SPECIFIC WEIGHT: 1.300+/-0.050 Kg/lit

VISCOSITY OF PRODUCT: 12000+/-2000 cps

APPLICATION SYSTEM: brush, special spalter.

DILUTION: Ready to be used, if necessary 3-5% with water, maximum.

MEDIUM OUTPUT mq/lit per coat: 7 - 9 mq/lit for coat.

DRYING: with air at 20°C and humidity 60%. Application at +5°C minimum.

out of touch	in the depth	time of covering
30-60 min	2-3 h	4-5 h

TABLE DIR.2004/42/CE :

A/I-BA Product= Decorative effects paint

Limits UE(2010)= 200 gr/lit

C.O.V. gr/Lt = 60 gr/Lt.

Dilution for application= 5% with water

C.O.V. (ready to be used) gr/Lt.= Max 60 gr/Lt.

PREPARATION OF THE SURFACE: On new surface, apply with brush a coat of acrylic primer SPECIAL FIXATIVE.

On dry surface, apply a coat with roller of uniform white primer DAS.

On old surface, brush thoroughly to remove all loose or flaking parts, restoring the missing parts with plaster, then proceed like for new surface.

APPLICATION CYCLES: When the surface is prepared apply a coat of Maldive distributing the product to obtain desired effect. To obtain an effect more shiny, when the product is dry, apply a second coat of Maldive.

NOTE: Available in lithographed bucklets of 14 L, 4 L, 1L.

STABILITY IN STOCK : 1 year at +5°/ +35°C in the original sealed containers. Protect from freezing weather.

All the informations in this card are exact and accurate, as we know, so they must be considered reliable. In any case they can't mean a guarantee from our, as the conditions of its use out of our control.



Gold



PINTI

PROFESSIONAL PAINT & TOOLS
MADE IN ITALY

February 2016

NAME: **VENEZIA**
SERIAL CODE: PPMAL

CLASSIFICATION: Water metallized paint sand effect for interiors with good covering and excellent easy application.

KIND OF USE: Ideal to protect and decorating inner surfaces. Maldive presents a good metallic materic effect with parts of surface shiny and parts matt, which increase the value of modern and classic interiors.

COLOUR: Pearl, gold, light gold, bronze, copper base.

CHEMICAL COMPOSITION: acrylic copolymer modified in water emulsion.

SPECIFIC WEIGHT: 1.300+/-0.050 Kg/lit

VISCOSITY OF PRODUCT: 12000+/-2000 cps

APPLICATION SYSTEM: brush, special spalter.

DILUTION: Ready to be used, if necessary 3-5% with water, maximum.

MEDIUM OUTPUT mq/lit per coat: 7 - 9 mq/lit for coat.

DRYING: with air at 20°C and humidity 60%. Application at +5°C minimum.

out of touch	in the depth	time of covering
30-60 min	2-3 h	4-5 h

TABLE DIR.2004/42/CE :

A/I-BA Product= Decorative effects paint

Limits UE(2010)= 200 gr/lit

C.O.V. gr/Lt = 60 gr/Lt.

Dilution for application= 5% with water

C.O.V. (ready to be used) gr/Lt.= Max 60 gr/Lt.

PREPARATION OF THE SURFACE: On new surface, apply with brush a coat of acrylic primer SPECIAL FIXATIVE.

On dry surface, apply a coat with roller of uniform white primer DAS.

On old surface, brush thoroughly to remove all loose or flaking parts, restoring the missing parts with plaster, then proceed like for new surface.

APPLICATION CYCLES: When the surface is prepared apply a coat of Maldive distributing the product to obtain desired effect. To obtain an effect more shiny, when the product is dry, apply a second coat of Maldive.

NOTE: Available in lithographed bucklets of 14 L, 4 L, 1L.

STABILITY IN STOCK : 1 year at +5°/ +35°C in the original sealed containers. Protect from freezing weather.

All the informations in this card are exact and accurate, as we know, so they must be considered reliable. In any case they can't mean a guarantee from our, as the conditions of its use out of our control.



Light Gold



PINTI

PROFESSIONAL PAINT & TOOLS
MADE IN ITALY

February 2016

NAME: **VENEZIA**
SERIAL CODE: PPMAB

CLASSIFICATION: Water metallized paint sand effect for interiors with good covering and excellent easy application.

KIND OF USE: Ideal to protect and decorating inner surfaces. Maldive presents a good metallic materic effect with parts of surface shiny and parts matt, which increase the value of modern and classic interiors.

COLOUR: Pearl, gold, light gold, bronze, copper base.

CHEMICAL COMPOSITION: acrylic copolymer modified in water emulsion.

SPECIFIC WEIGHT: 1.300+/-0.050 Kg/lit

VISCOSITY OF PRODUCT: 12000+/-2000 cps

APPLICATION SYSTEM: brush, special spalter.

DILUTION: Ready to be used, if necessary 3-5% with water, maximum.

MEDIUM OUTPUT mq/lit per coat: 7 - 9 mq/lit for coat.

DRYING: with air at 20°C and humidity 60%. Application at +5°C minimum.

out of touch	in the depth	time of covering
30-60 min	2-3 h	4-5 h

TABLE DIR.2004/42/CE :

A/I-BA Product= Decorative effects paint

Limits UE(2010)= 200 gr/lit

C.O.V. gr/Lt = 60 gr/Lt.

Dilution for application= 5% with water

C.O.V. (ready to be used) gr/Lt.= Max 60 gr/Lt.

PREPARATION OF THE SURFACE: On new surface, apply with brush a coat of acrylic primer SPECIAL FIXATIVE.

On dry surface, apply a coat with roller of uniform white primer DAS.

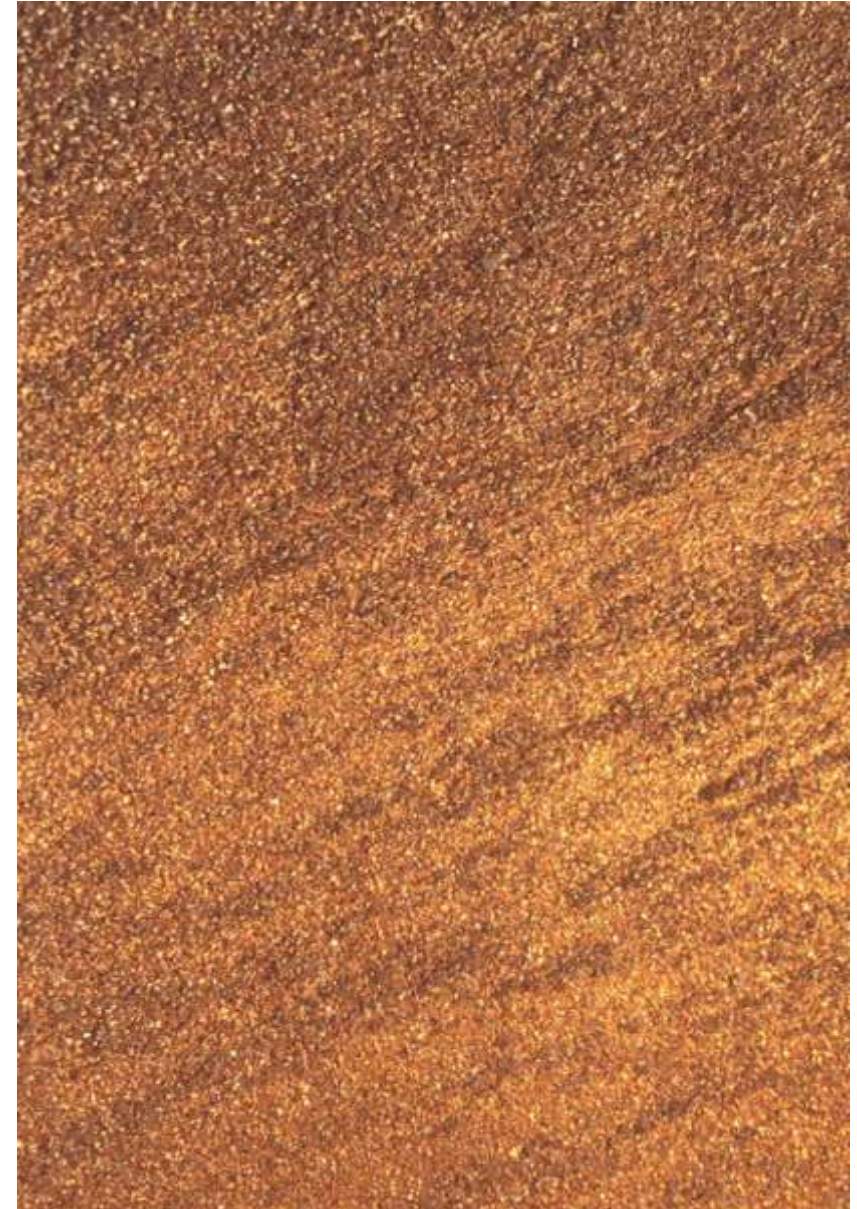
On old surface, brush thoroughly to remove all loose or flaking parts, restoring the missing parts with plaster, then proceed like for new surface.

APPLICATION CYCLES: When the surface is prepared apply a coat of Maldive distributing the product to obtain desired effect. To obtain an effect more shiny, when the product is dry, apply a second coat of Maldive.

NOTE: Available in lithographed bucklets of 14 L, 4 L, 1L.

STABILITY IN STOCK : 1 year at +5°/ +35°C in the original sealed containers. Protect from freezing weather.

All the informations in this card are exact and accurate, as we know, so they must be considered reliable. In any case they can't mean a guarantee from our, as the conditions of its use out of our control.



Bronze



PINTI

PROFESSIONAL PAINT & TOOLS
MADE IN ITALY

February 2016

NAME: **VENEZIA**
SERIAL CODE: PPMAP

CLASSIFICATION: Water metallized paint sand effect for interiors with good covering and excellent easy application.

KIND OF USE: Ideal to protect and decorating inner surfaces. Maldive presents a good metallic materic effect with parts of surface shiny and parts matt, which increase the value of modern and classic interiors.

COLOUR: Pearl, gold, light gold, bronze, copper base.

CHEMICAL COMPOSITION: acrylic copolymer modified in water emulsion.

SPECIFIC WEIGHT: 1.300+/-0.050 Kg/lit

VISCOSITY OF PRODUCT: 12000+/-2000 cps

APPLICATION SYSTEM: brush, special spalter.

DILUTION: Ready to be used, if necessary 3-5% with water, maximum.

MEDIUM OUTPUT mq/lit per coat: 7 - 9 mq/lit for coat.

DRYING: with air at 20°C and humidity 60%. Application at +5°C minimum.

out of touch	in the depth	time of covering
30-60 min	2-3 h	4-5 h

TABLE DIR.2004/42/CE :

A/I-BA Product= Decorative effects paint

Limits UE(2010)= 200 gr/lit

C.O.V. gr/Lt = 60 gr/Lt.

Dilution for application= 5% with water

C.O.V. (ready to be used) gr/Lt.= Max 60 gr/Lt.

PREPARATION OF THE SURFACE: On new surface, apply with brush a coat of acrylic primer SPECIAL FIXATIVE.

On dry surface, apply a coat with roller of uniform white primer DAS.

On old surface, brush thoroughly to remove all loose or flaking parts, restoring the missing parts with plaster, then proceed like for new surface.

APPLICATION CYCLES: When the surface is prepared apply a coat of Maldive distributing the product to obtain desired effect. To obtain an effect more shiny, when the product is dry, apply a second coat of Maldive.

NOTE: Available in lithographed bucklets of 14 L, 4 L, 1L.

STABILITY IN STOCK : 1 year at +5°/ +35°C in the original sealed containers. Protect from freezing weather.

All the informations in this card are exact and accurate, as we know, so they must be considered reliable. In any case they can't mean a guarantee from our, as the conditions of its use out of our control.



Pearl